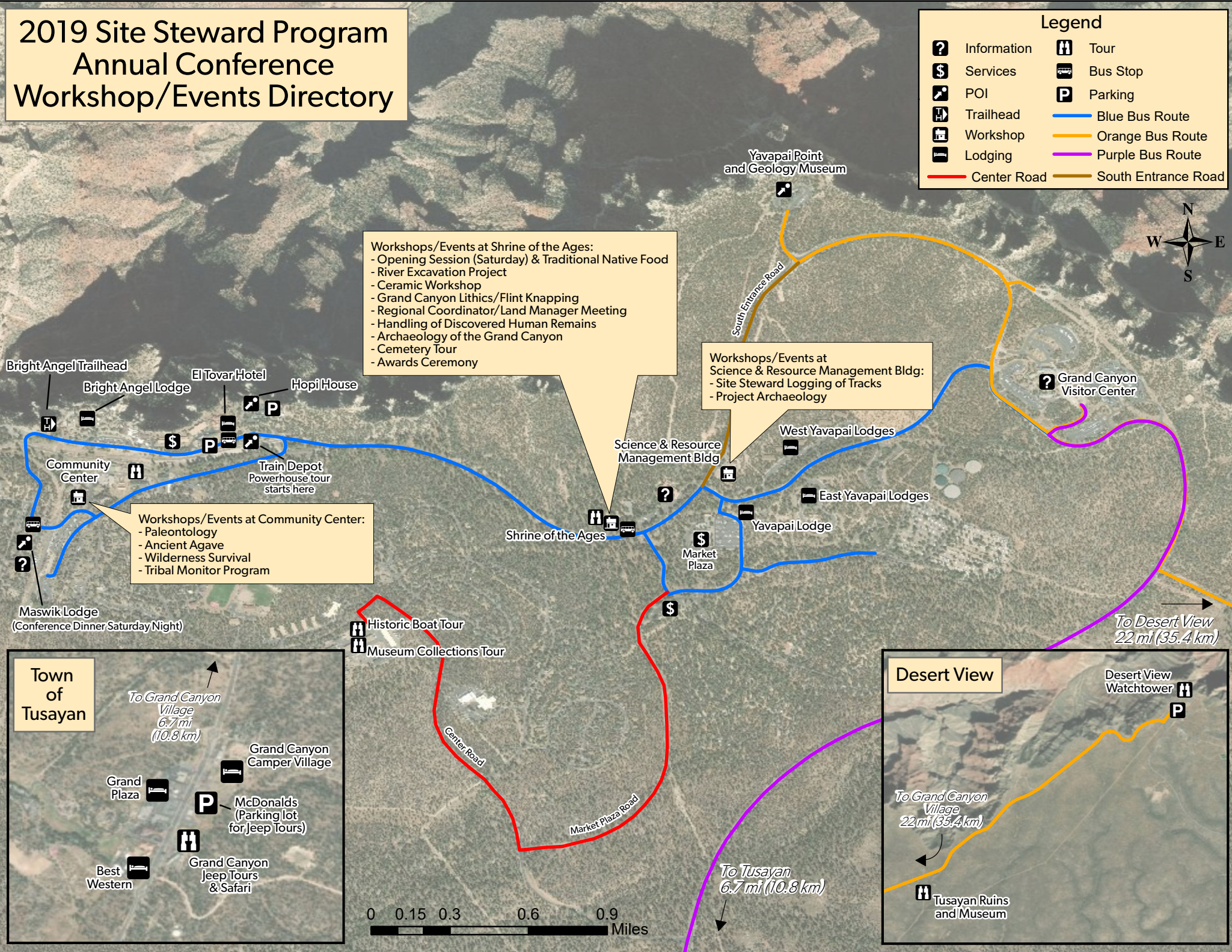


2019 Site Steward Program Annual Conference Workshop/Events Directory

Legend

- Information
- Services
- POI
- Trailhead
- Workshop
- Lodging
- Tour
- Bus Stop
- Parking
- Blue Bus Route
- Orange Bus Route
- Purple Bus Route
- Center Road
- South Entrance Road



Workshops/Events at Shrine of the Ages:

- Opening Session (Saturday) & Traditional Native Food
- River Excavation Project
- Ceramic Workshop
- Grand Canyon Lithics/Flint Knapping
- Regional Coordinator/Land Manager Meeting
- Handling of Discovered Human Remains
- Archaeology of the Grand Canyon
- Cemetery Tour
- Awards Ceremony

Workshops/Events at Science & Resource Management Bldg:

- Site Steward Logging of Tracks
- Project Archaeology

Workshops/Events at Community Center:

- Paleontology
- Ancient Agave
- Wilderness Survival
- Tribal Monitor Program

Town of Tusayan

To Grand Canyon Village
6.7 mi (10.8 km)

Grand Canyon Camper Village

Grand Plaza

McDonald's (Parking lot for Jeep Tours)

Best Western

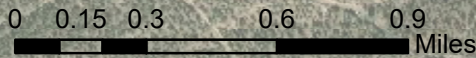
Grand Canyon Jeep Tours & Safari

Desert View

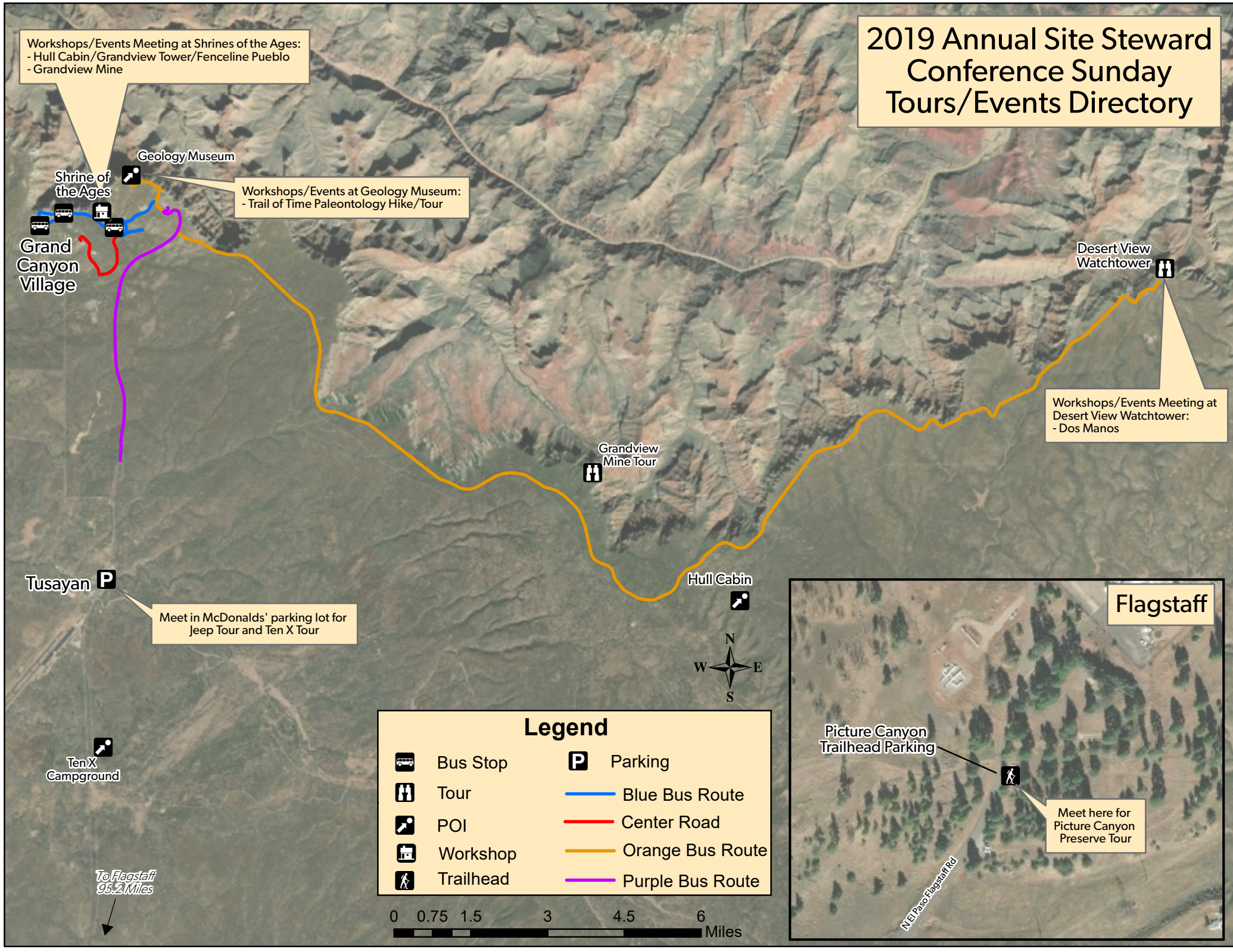
To Grand Canyon Village
22 mi (35.4 km)

Desert View Watchtower

Tusayan Ruins and Museum



2019 Annual Site Steward Conference Sunday Tours/Events Directory





Pocket Map
South Rim Services Guide



Mather Point



Park Ranger Program



Grand Canyon Visitor Center Complex



Desert View Watchtower

Services, Facilities, and Viewpoints

Open daily; call or check [go.nps.gov/gc_hours](https://www.nps.gov/gc_hours) for specific hours.

Visitor Center

Grand Canyon Visitor Center, trails, and Grand Canyon views

Grand Canyon Visitor Center Complex Shuttle stop for Kaibab/Rim Route, Village Route, and Tusayan Route; parking, drinking water, restroom, picnic tables

Bright Angel Bicycles & Café at Mather Point **SBLDG \$** Bicycle, wheelchair, and stroller rentals; guided tours; prepackaged sandwiches, breakfast burritos, juices, espresso bar; supplies; AED, 928-638-3055

Grand Canyon Association (GCA) Park Store at the Visitor Center **G** passport stamp, 928-638-7145

Grand Canyon Visitor Center Information, exhibits, theater; passport stamp, free local phone calls, AED, 928-638-7888

Mather Point Shuttle stop; sunrise and sunset canyon views

Pipe Creek Vista Shuttle stop; canyon views

South Kaibab Trailhead Shuttle stop, canyon views, drinking water (trailhead only), restroom, picnic tables. Access to steep trail with no water or shade for day hikes down to Ooh Aah Point, Cedar Ridge, and Skeleton Point. Ask for a hiking brochure at visitor centers or Backcountry Information Center.

Yaki Point Shuttle stop, sunset and sunrise canyon views, restroom, picnic tables

Yavapai Geology Museum/Yavapai Point **G** Shuttle stop; information, exhibits, GCA Park Store, canyon views; drinking water, restroom, passport stamp, AED, 928-638-7890

Market Plaza

Lodging, camping, groceries, and ATM; no Grand Canyon views

Camper Services Laundry, showers, dump station, Wi-Fi (no fee), pay phone, AED, 928-638-6350

Canyon Village Market “General Store” **SBLDG \$** Deli, groceries, camping supplies, gear rental, drinking water, exterior restroom, picnic tables, Wi-Fi (no fee), 928-638-2262

Chase Bank ATM, foreign currency exchange for members only, 928-638-2437

Mather Campground Shuttle stop; year-round tent and RV camping—maximum 30 feet (9 m), no hookups, leashed pets ok, drinking water, restroom, AED; reservations 877-444-6777

Park Headquarters Information, research library; drinking water, restroom, Wi-Fi (no fee), AED, 928-638-7888

Post Office Mail, stamps; pay phone, 928-638-2512

Shrine of the Ages Shuttle stop; special events; drinking water, restroom, picnic tables, AED

Trailer Village Shuttle stop; year-round RV hookups, leashed pets ok, drinking water, restroom, AED, 928-638-1006

Yavapai Lodge **SBLDOHG \$** Shuttle stop; pizza, salads, sandwiches, and BBQ; coffee shop; drinking water, restroom, Wi-Fi (no fee), AED, 928-638-4001

Legend		Web Links	
S	Snack	O	Lounge
B	Breakfast	H	Lodging
L	Lunch	G	Books/Gifts
D	Dinner		
\$	Food \$14.99 and less		
\$\$	Food \$15 to \$24.99		
\$\$\$	Food \$25 and up		
Information/Visitor Centers			
AED	Automated External Defibrillator		

Village

Historic lodging, dining, gift shops, trails, and Grand Canyon views

Backcountry Information Center Shuttle stop; information, hiking maps, overnight backcountry permits; drinking water, restroom, 928-638-7875

Bright Angel Lodge **SBLDOHG \$-\$\$** Shuttle stop; history room with exhibits, canyon views; two restaurants—one casual dining and one Arizona cuisine—entrees, burgers, sandwiches, salads; coffee shop, ice cream fountain (seasonal); drinking water, restroom, ATM, Wi-Fi (fee), transportation desk (tours, mule rides), AED, 928-638-2631

Bright Angel Trailhead Canyon views, mule corral; drinking water, restroom, emergency phone. Access to steep trail with day hikes down to 1 ½-Mile Resthouse, 3-Mile Resthouse, and Indian Garden. Ask for a hiking brochure at visitor centers or Backcountry Information Center.

Clinic Urgent care services, walk-ins welcome; first aid, AED, 928-638-2551

Community Library Wi-Fi (no fee), 928-638-2718

El Tovar Hotel **BLDOHG \$-\$\$\$** Canyon views; tapas, soups, salads, entrees; drinking water, restroom, Wi-Fi (fee), concierge (tours, mule rides), AED, National Historic Landmark, 928-638-2631

Garage Emergency repairs, tow service, 928-638-2631

Hopi House American Indian arts and crafts for sale, canyon views, National Historic Landmark, 928-638-2631

Kachina Lodge **H** Canyon views; check in at El Tovar Hotel, 928-638-2631

Kennel Dogs and cats, proof of vaccinations required, day and overnight rates available, 928-638-0534

Kolb Studio **G** Information, exhibits, GCA Park Store, canyon views, passport stamp, AED, 928-638-2771

Lookout Studio **G** Canyon views, AED, National Historic Landmark, 928-638-2631

Maswik Lodge **SBLDHG \$** Shuttle stop; cafeteria, pizza pub; drinking water, restroom, ATM, Wi-Fi (fee), transportation desk (tours, mule rides), AED, 928-638-2631

Mule Barn Main livery barn for mule trips, 928-638-2631

Thunderbird Lodge **H** Canyon views; Check in at Bright Angel Lodge, AED, 928-638-2631

Train Depot Shuttle stop; one of the oldest log train depots in the United States, National Historic Landmark, 800-843-8724

Verkamp’s Visitor Center **G** Information, exhibits, GCA Park Store, canyon views; drinking water, restroom, picnic tables, passport stamp, AED, 928-638-7146

Village Route Transfer Shuttle stop for Village Route; transfer to Hermits Rest Route

Services not Shown on Map

Lost and Found 928-638-7798 and 928-638-2631 and 928-638-4001

North Rim Open mid-May to late-October; campground reservations 877-444-6777; lodging reservations 877-386-4383

Phantom Ranch Meals, hiker dormitory, and cabin space at bottom of Grand Canyon; reservations 888-297-2757

Religious Services See schedules at Shrine of the Ages, Post Office, Grand Canyon Visitor Center, and Park Headquarters

Taxi 928-638-2631

Hermits Rest (West of Village)

Grand Canyon views and Rim Trail along 7-mile (11 km) Hermit Road; attractions and facilities listed from east to west

Hermits Rest Route Transfer Shuttle stop for Hermits Rest Route; transfer to Village Route; canyon views

Trailview Overlook Westbound shuttle stop; view of canyon, Bright Angel Trail, and village historic district

Maricopa Point Westbound shuttle stop; view of canyon and former Orphan Mine

Powell Point East- and westbound shuttle stop; canyon views, memorial to Major John Wesley Powell expeditions of 1869 and 1872

Hopi Point Westbound shuttle stop; canyon and Colorado River views; restroom

Mohave Point East- and westbound shuttle stop; sunrise and sunset canyon and Colorado River views; picnic tables

The Abyss Westbound shuttle stop; canyon views, 3,000 foot (914 m) drop off

Monument Creek Vista Westbound shuttle stop; canyon views

Pima Point East- and westbound shuttle stop; hear Colorado River; sunrise and sunset canyon views

Hermits Rest **SG \$** Shuttle stop; canyon views, drinking water, restroom, picnic tables, AED, National Historic Landmark, 928-638-2631

Hermit Trailhead Canyon views, picnic tables. Access to steep, rough, and unmaintained trail for experienced desert hikers only.

Desert View (East of Village)

Grand Canyon views, unmarked pullouts, picnic areas, and services along the 22-mile (35 km) Desert View Drive; attractions and facilities listed from west to east

Grandview Point Parking, canyon views, restroom, picnic tables. Access to very steep, unmaintained Grandview Trail—experienced desert hikers only.

Buggeln Parking, restroom, picnic tables

Moran Point Parking; sunrise and sunset canyon and Colorado River views

Tusayan Museum and Ruin **G** Parking; information, exhibits, GCA Park Store; short trail to ancestral Puebloan village; drinking water (summer only), restroom, picnic tables, passport stamp, AED, 928-638-7652

Lipan Point Parking; views of Hance Rapid, Unkar Delta, and Grand Canyon Supergroup

Navajo Point Parking; highest viewpoint on South Rim at 7,461 feet (2,275 m); views of canyon, Desert View Watchtower, and Colorado River

Desert View Parking, drinking water, restroom, picnic tables
Desert View Watchtower/Desert View Point **G** Information, GCA Park Store; 360-degree view of canyon, Colorado River, and surrounding landscape; passport stamp, AED, National Historic Landmark, 928-638-8960

Desert View Trading Post **SG \$** Coffee, ice cream, AED, 928-638-3150

Desert View Market/Deli **SBLG \$** Groceries, supplies, drinking water, ATM, pay phone; breakfast sandwiches, salads, cold/hot sandwiches, hot dogs, 928-638-2393

Desert View Service Station **S \$** Diesel and unleaded fuel, 928-638-2360

Desert View Campground Open mid-April to mid-October for tent and RV camping—maximum 30 feet (9 m), no hookups, leashed pets ok, drinking water, restroom

Free, Daily Park Ranger Programs

Grand Canyon National Park offers free, daily park ranger programs in the Village and Desert View areas. Learn about geology, fossils, plants, animals, and people during walks, talks, hikes, demonstrations, evening programs, and more! Look for special programs for families with children ages 6–14 during summer. Check visitor centers or [go.nps.gov/gc_programs](https://www.nps.gov/gc_programs) for a full listing

Protect the Park, Protect Yourself

Use sunblock, stay hydrated, take your time, and rest to reduce the risk of sunburn, dehydration, nausea, shortness of breath, and exhaustion. The South Rim’s high elevation (7,000 feet/2,135 m) and dry climate affects you differently than your home environment.

Launching, landing, or operating an unmanned aircraft is prohibited inside Grand Canyon National Park.

Hikers can be injured by rocks and coins tossed over the edge and rocks dislodged by walking off trail.

Leave rocks, plants, wood, and artifacts where you find them.

Keep wildlife wild. Approaching and feeding wildlife is dangerous and illegal. Elk and deer can become aggressive and will defend their space. Keep a safe distance of two bus lengths or 100 feet (30 m) from all wildlife. Do not feed the squirrels. They will bite and can carry disease.

Winter weather varies greatly and changes suddenly. Be prepared to layer clothing for cold, rain, wind, and snow. Trails and walkways may be icy. Wear over-the-shoe traction devices for your safety. Road and weather conditions: 928-638-7496.

Free, spring-fed drinking water is available from bottle filling stations at major trailheads, visitor centers, grocery stores, and lodges.

Stay behind railings and away from cliffs. Hold on to children. Do not back up without looking around you. Always be aware of your surroundings.

Use recycling and trash receptacles to help keep Grand Canyon clean.

Emergencies call 911

Information

Superintendent Christine Lehnertz
Grand Canyon National Park
PO Box 129
Grand Canyon, AZ 86023-0129 USA

Park Headquarters
928-638-7888

Website
[nps.gov/grca](https://www.nps.gov/grca)



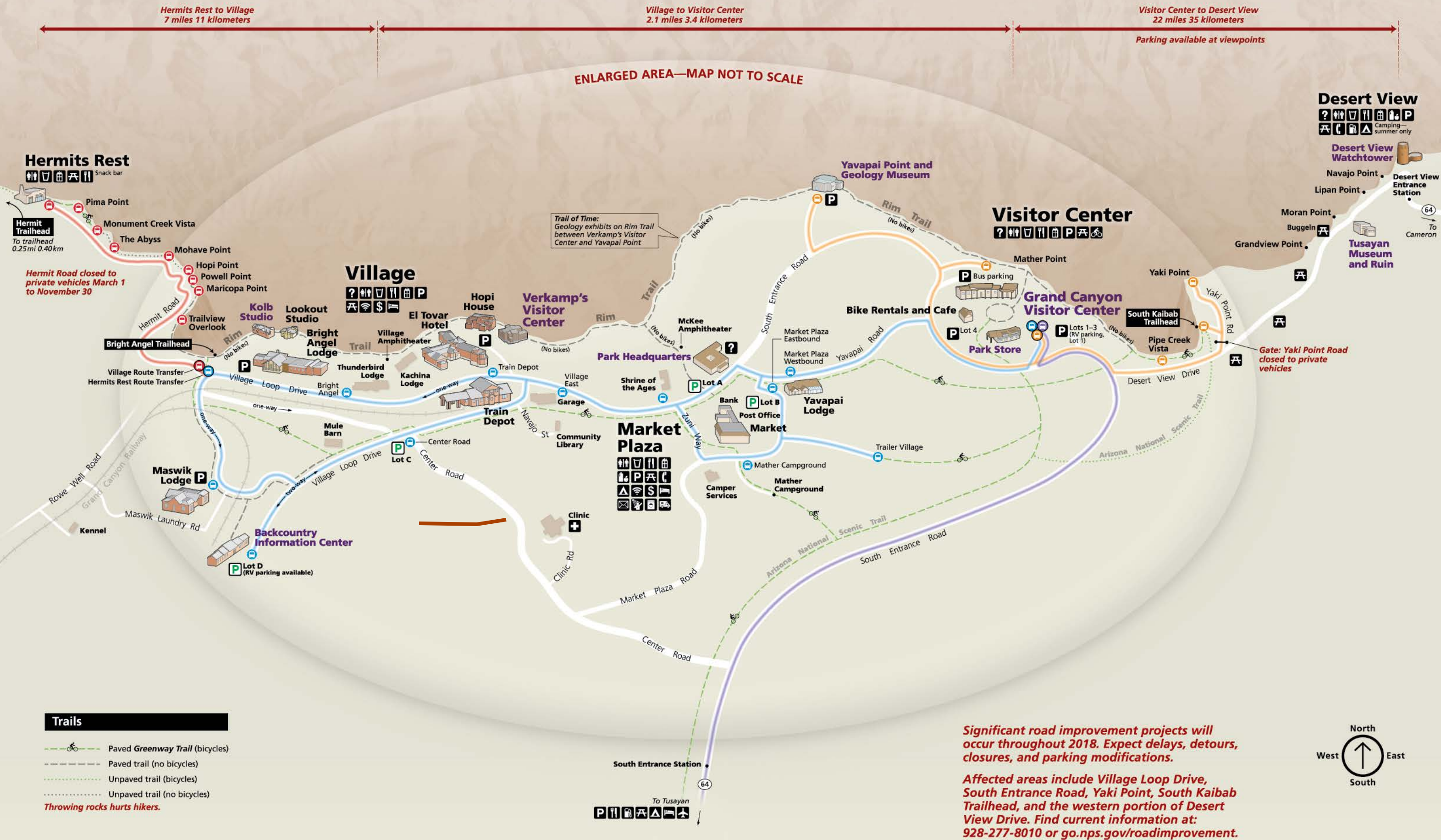
Grand Canyon National Park
Located in northern Arizona, this World Heritage Site encompasses 277 miles (446 km) of the Colorado River and adjacent uplands. One of the most spectacular examples of erosion anywhere in the world, Grand Canyon offers visitors incomparable vistas.

The *Pocket Map* is published by Grand Canyon National Park with support from your entrance fees. It is available in French, German, Spanish, Italian, Japanese, Chinese, and Korean. An *Accessibility Guide* is also available. Ask in visitor centers for a hiking brochure.

The National Park Service cares for the special places saved by the American people so that all may experience our heritage.

EXPERIENCE YOUR AMERICA™

Getting Around the South Rim



Trails

- Paved **Greenway Trail** (bicycles)
- Paved trail (no bicycles)
- Unpaved trail (bicycles)
- Unpaved trail (no bicycles)
- Throwing rocks hurts hikers.**

Distances

Rim Trail

Hermit Road to Pima Point	1.0mi	1.6km
Pima Point to Monument Creek Vista	1.8mi	2.9km
Monument Creek Vista to The Abyss	1.0mi	1.6km
The Abyss to Mojave Point	1.1mi	1.8km
Mojave Point to Hopi Point	1.0mi	1.6km
Hopi Point to Powell Point	0.3mi	0.5km
Powell Point to Maricopa Point	0.5mi	0.8km
Maricopa Point to Trailview Overlook	0.7mi	1.1km
Trailview Overlook to Bright Angel Trailhead	0.5mi	0.8km
Bright Angel Trailhead to Verkamp's	0.5mi	0.8km
Verkamp's to Yavapai Point (Trail of Time)	1.4mi	2.3km
Yavapai Point to Mather Point	0.7mi	1.1km
Mather Point to Pipe Creek Vista	1.4mi	2.3km
Pipe Creek Vista to South Kaibab Trailhead	0.9mi	1.4km
Total distance	12.8mi	20.6km

Greenway Trail

South Kaibab Trailhead to Pipe Creek Vista	0.9mi	1.4km
Pipe Creek Vista to Grand Canyon Visitor Center	1.5mi	2.5km
Grand Canyon Visitor Center to Market Plaza	0.9mi	1.4km
Market Plaza to Village	1.0mi	1.6km
Village to Hermit Road	0.6mi	1.0km
Monument Creek Vista to Pima Point	1.8mi	2.9km
Grand Canyon Visitor Center to Trailer Village	0.7mi	1.2km
Grand Canyon Visitor Center to Mather Campground	1.2mi	2.0km
Grand Canyon Visitor Center to Tusayan	6.6mi	10.6km

Road

Grand Canyon Visitor Center to:		
Desert View	22.0mi	35.4km
Market Plaza	0.9mi	1.4km
Tusayan	6.7mi	10.8km
Village	2.1mi	3.4km
Village to:		
Grand Canyon Visitor Center	2.1mi	3.4km
Hermit Road	7.4mi	11.9km
Market Plaza	1.4mi	2.3km
Tusayan	6.3mi	10.1km

Services

Airport	Gas station	Public parking
ATM	Gifts	Restrooms
Bike rentals	Information	RV camping
Campground	Laundromat	Showers
Drinking water	Lodging	Store
First aid	Picnic area	Telephone
Food service	Post office	Wi-Fi
If visitor center parking is full, use Lots A-D		

Free Shuttle Buses

Information

- Bus routes and drivable roads unless otherwise indicated
- Bus stops
- Bus route transfers
- Hours of Operation**
Shuttle buses run every 10–15 minutes during the day. They run approximately every 30 minutes during the hour before sunrise and the hour after sunset.
- Bus Rules**
 - No eating or open drink containers.
 - No pets. Service animals permitted.
 - Collapse strollers before entering the shuttle bus. No oversized or jogging strollers. Remove baby-back carriers when seated.
 - Shuttle buses can accommodate two or three bicycles but not tag-alongs, baby trailers, or children's bicycles with wheels less than 16 inches (41 cm). Riders must load and unload their bicycles.
 - Shuttle buses only stop at designated bus stops.

Hermit Road Route (Red)

March 1 to November 30

Stop	West-bound	East-bound
Village Route Transfer		
Trailview Overlook		
Maricopa Point		
Powell Point		
Hopi Point		
Mohave Point		
The Abyss		
Monument Creek Vista		
Pima Point		
Hermit Road		
Pima Point		
Mojave Point		
Powell Point		
Village Route Transfer		

Tusayan Route (Purple)

March 1 to September 30

Stop	South-bound	North-bound
Grand Canyon Visitor Center		
IMAX/R.P.'s Stage Stop		
Best Western Grand Canyon Squire Inn		
Grand Hotel		
Big E Steakhouse & Saloon		
Grand Canyon Visitor Center		

Village Route (Blue)

Year-round

Stop	West-bound	East-bound
Grand Canyon Visitor Center		
Market Plaza Westbound		
Shrine of the Ages		
Train Depot		
Bright Angel Lodge		
Hermit Road Route Transfer		
Maswik Lodge		
Backcountry Information Center		
Center Road		
Village East		
Shrine of the Ages		
Mather Campground		
Trailer Village		
Market Plaza Eastbound		
Grand Canyon Visitor Center		

Kaibab/Rim Route (Orange)

Year-round

Stop	Rim route	Kaibab route
Grand Canyon Visitor Center		
Mather Point		
Yavapai Geology Museum		
Grand Canyon Visitor Center		
South Kaibab Trailhead		
Yaki Point		
Pipe Creek Vista		
Grand Canyon Visitor Center		

DESERT VIEW DRIVE



Explore Desert View Drive

The less-crowded Desert View Drive, studded with breathtaking overlooks and un-named pullouts, gives you the chance to experience the ever-changing moods of Grand Canyon.

Navajo and Lipan Points Look across the canyon and toward the river to see the tilted layers of the Supergroup. These rocks are only visible from a few areas along the South Rim and tell an interesting geologic story.

The Watchtower Mary Colter gained inspiration through her travels in the Southwest for this impressive building reminiscent of ancient cultures' dwellings. Climb the 85 steps for a 360 degree view.

